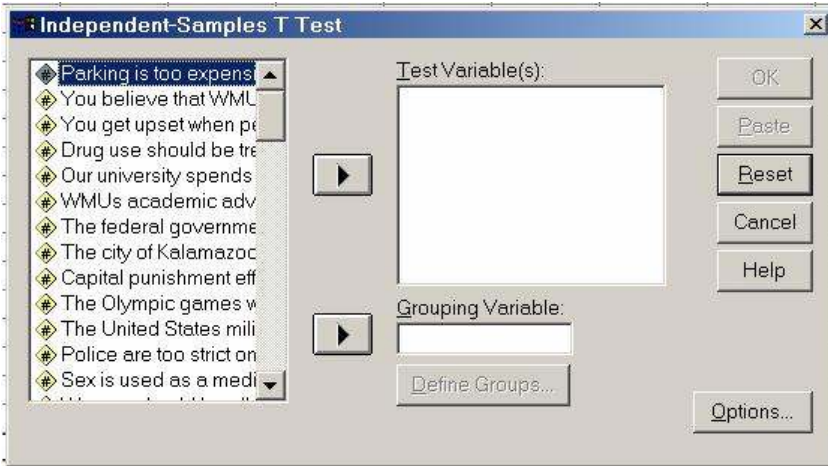


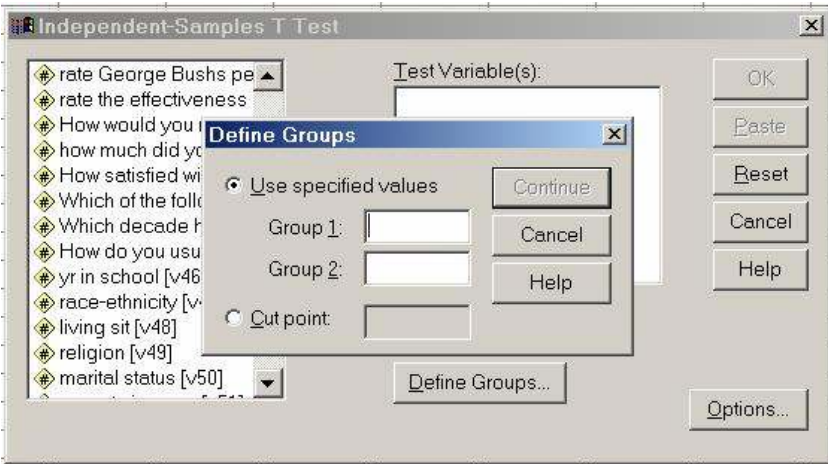
Lab handout for T-Test homework

1. Open your SPSS data file.
2. Click “analyze”, “compare means” “independent samples t-test” and you will see the following dialog window:



3. Move any one of our “*original*” (before collapsing) interval/ratio level of measurement variables into the “test variable” box.

Move “gender” into the “grouping variable” box. Then click on “define groups”. You will see the “Define Groups” dialog box shown below.



4. Group 1 in this case is 1 (for males), and Group 2 is 2 (for females) (use the numbers 1 and 2, not words “male” and “female”).

Click continue after you have entered the numbers.

Then click “OK” and the t-test will run giving you the output shown below.

OUTPUT:

Group Statistics

	Gender	N	Mean	Std. Deviation	Std. Error Mean
gpa	male	217	2.9221	.6007	4.078E-02
	female	254	3.2241	.5136	3.223E-02

Independent Samples Test

		Levene's Test for Equality of Variances		t-test for Equality of Means						
		F	Sig.	t	df	Sig. (2-tailed)	Mean Difference	Std. Error Difference	95% Confidence Interval of the Difference	
									Lower	Upper
gpa	Equal variances assumed	1.942	.164	-5.883	469	.000	-.3021	5.135E-02	-.4030	-.2012
	Equal variances not assumed			-5.811	427.626	.000	-.3021	5.198E-02	-.4042	-.1999

5. Put your name on it and print it. This is your homework due at the next class meeting.